

Ambassador Ave between Quadra St and Morris Dr

October 28, 2019 To November 01, 2019



The data presented here is for information purposes only and should not be considered authoritative for construction, geotechnical, engineering, navigational, legal, or other site-specific uses. The information shared is owned by the Transportation Division of the Engineering Department at the District of Saanich. Accuracy is not guaranteed.

Start Date: 28-Oct-19
 Start Time: 0:52
 Station ID: R0025-01

Location 1: Ambassador Ave between Quadra St and Morris Dr

Note:

DATE:	October 28, 2019		October 29, 2019		October 30, 2019		October 31, 2019		November 1, 2019		WK AVG		WK AVG	HOURLY
	MON		TUE		WED		THURS		FRI		EB	WB	CH 1+2	%
Time:	EB	WB	EB	WB	EB	WB	EB	WB	EB	WB	EB	WB		
12-1 AM			2	0	1	1	2	2			2	1	3	0.3%
1-2 AM			0	1	1	1	0	1			0	1	1	0.1%
2-3 AM			1	0	1	1	1	1			1	1	2	0.2%
3-4 AM			1	0	1	0	1	0			1	0	1	0.1%
4-5 AM			0	0	0	0	0	0			0	0	0	0.0%
5-6 AM			2	3	2	1	1	2			2	2	4	0.4%
6-7 AM			7	10	4	4	9	9			7	8	14	1.5%
7-8 AM			33	18	26	15	28	15			29	16	45	4.7%
8-9 AM			64	54	62	53	56	51			61	53	113	11.8%
9-10 AM			33	19	35	20	35	30			34	23	57	6.0%
10-11 AM			23	19	30	14	37	21			30	18	48	5.0%
11-12 PM			28	17	27	12	36	23			30	17	48	5.0%
12-1 PM			33	23	33	23	33	31			33	26	59	6.1%
1-2 PM			32	16	16	14	34	22			27	17	45	4.7%
2-3 PM			46	37	32	29	47	54			42	40	82	8.5%
3-4 PM			59	48	54	58	46	44			53	50	103	10.7%
4-5 PM			47	52	44	39	51	45			47	45	93	9.6%
5-6 PM			40	33	42	29	46	25			43	29	72	7.5%
6-7 PM			29	23	33	17	24	22			29	21	49	5.1%
7-8 PM			22	23	37	26	18	8			26	19	45	4.7%
8-9 PM			16	21	14	12	26	26			19	20	38	4.0%
9-10 PM			9	14	5	20	8	9			7	14	22	2.3%
10-11 PM			4	5	5	9	13	8			7	7	15	1.5%
11-12 AM			2	1	4	1	0	2			2	1	3	0.3%
LANES			533	437	509	399	552	451			531	429	960	100.0%
TOTAL			970		908		1003				970			
	MON		TUE		WED		THURS		FRI		WK AVG			

PEAK HOUR					TOTAL VEHICALS-PEAK PERIODS		2 HOUR PEAK INTERVALS				
MAX. 7 - 9 am PEAK HOUR	113	⇒	11.8%	between 8-9 AM	429	⇒	6 HR TOTAL	2 HR AM (7 - 9 AM)			
MAX. 7 - 11 am PEAK HOUR	113	⇒	11.8%	between 8-9 AM	323	⇒	4 HR TOTAL	VEH / HR	VEH / 2HR	2 HR %	
								7-8 AM	45	158	16.5%
								8-9 AM	113		
MAX. 11 am - 1 pm PEAK HOUR	59	⇒	6.1%	between 12-1 PM	24 HOUR FACTORS						
MAX. 11 am - 3 pm PEAK HOUR	82	⇒	8.5%	between 2-3 PM							
MAX. 4 - 6 pm PEAK HOUR	93	⇒	9.6%	between 4-5 PM							
MAX. 3 - 6 pm PEAK HOUR	103	⇒	10.7%	between 3-4 PM	2.24	⇒	6-24 HR FACT.	2 HR NOON (11 - 1 PM)			
					2.98	⇒	4-24 HR FACT.	VEH / HR	VEH / 2HR	2 HR %	
								11-12 PM	48	106	11.1%
								12-1 PM	59		
								2 HR PM (4 - 6 PM)			
								VEH / HR	VEH / 2HR	2 HR %	
								4-5 PM	93	164	17.1%
								5-6 PM	72		

Ambassador Ave between Quadra St and Morris Dr

Westbound

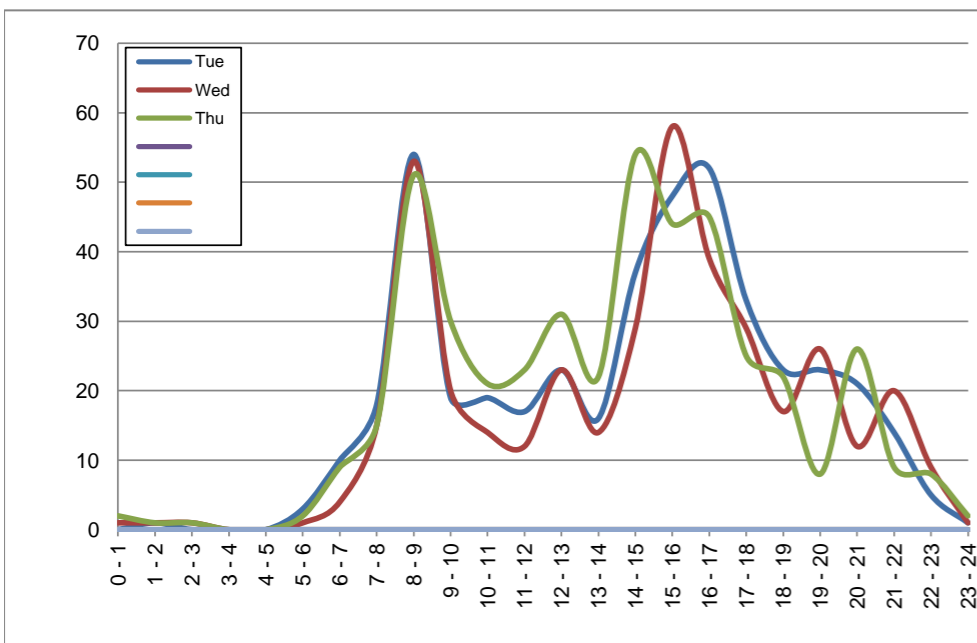
October 29, 2019 to October 31, 2019

Hourly Volumes

Time Period	Tue	Wed	Thu			
	Oct 29	Oct 30	Oct 31			
0 - 1	0	1	2			
1 - 2	1	1	1			
2 - 3	0	1	1			
3 - 4	0	0	0			
4 - 5	0	0	0			
5 - 6	3	1	2			
6 - 7	10	4	9			
7 - 8	18	15	15			
8 - 9	54	53	51			
9 - 10	19	20	30			
10 - 11	19	14	21			
11 - 12	17	12	23			
12 - 13	23	23	31			
13 - 14	16	14	22			
14 - 15	37	29	54			
15 - 16	48	58	44			
16 - 17	52	39	45			
17 - 18	33	29	25			
18 - 19	23	17	22			
19 - 20	23	26	8			
20 - 21	21	12	26			
21 - 22	14	20	9			
22 - 23	5	9	8			
23 - 24	1	1	2			
Day Total	437	399	451			

15-Minute Volumes

Time Start	Tue	Wed	Thu				Time Start	Tue	Wed	Thu			
	Oct 29	Oct 30	Oct 31					Oct 29	Oct 30	Oct 31			
0:00	0	0	0				12:00	6	6	9			
0:15	0	0	1				12:15	8	4	10			
0:30	0	0	0				12:30	6	7	5			
0:45	0	1	1				12:45	3	6	7			
1:00	0	0	0				13:00	5	2	7			
1:15	0	1	0				13:15	5	3	5			
1:30	1	0	1				13:30	3	4	6			
1:45	0	0	0				13:45	3	5	4			
2:00	0	0	0				14:00	5	5	6			
2:15	0	0	0				14:15	4	5	14			
2:30	0	0	0				14:30	18	10	19			
2:45	0	1	1				14:45	10	9	15			
3:00	0	0	0				15:00	11	21	13			
3:15	0	0	0				15:15	12	11	12			
3:30	0	0	0				15:30	14	12	8			
3:45	0	0	0				15:45	11	14	11			
4:00	0	0	0				16:00	12	10	10			
4:15	0	0	0				16:15	13	10	7			
4:30	0	0	0				16:30	10	12	14			
4:45	0	0	0				16:45	17	7	14			
5:00	0	0	0				17:00	9	12	9			
5:15	2	0	0				17:15	7	6	3			
5:30	1	1	2				17:30	12	5	9			
5:45	0	0	0				17:45	5	6	4			
6:00	1	0	1				18:00	9	4	7			
6:15	1	1	3				18:15	5	2	6			
6:30	4	1	3				18:30	7	3	4			
6:45	4	2	2				18:45	2	8	5			
7:00	4	3	4				19:00	4	9	2			
7:15	7	5	3				19:15	6	8	1			
7:30	4	1	3				19:30	6	4	2			
7:45	3	6	5				19:45	7	5	3			
8:00	6	11	6				20:00	9	4	13			
8:15	13	15	12				20:15	3	3	2			
8:30	26	20	17				20:30	6	3	8			
8:45	9	7	16				20:45	3	2	3			
9:00	3	10	10				21:00	6	6	5			
9:15	3	4	7				21:15	1	7	2			
9:30	9	1	5				21:30	1	6	1			
9:45	4	5	8				21:45	6	1	1			
10:00	3	5	5				22:00	0	4	3			
10:15	8	6	4				22:15	1	2	1			
10:30	6	1	6				22:30	4	2	3			
10:45	2	2	6				22:45	0	1	1			
11:00	7	3	3				23:00	1	0	1			
11:15	4	3	4				23:15	0	1	1			
11:30	4	3	8				23:30	0	0	0			
11:45	2	3	8				23:45	0	0	0			



Site notes:

Ambassador Ave between Quadra St and Morris Dr

Eastbound

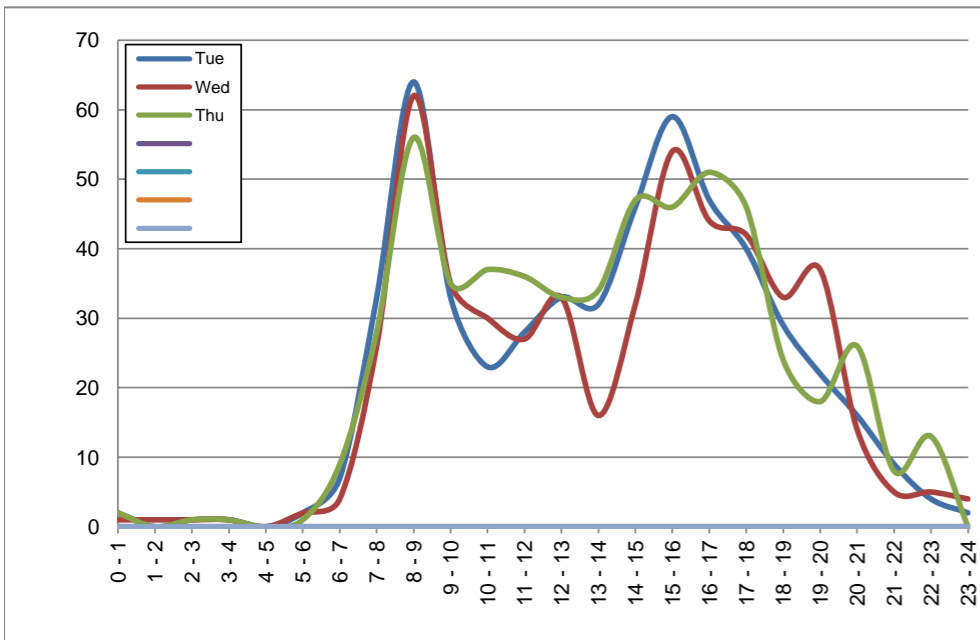
October 29, 2019 to October 31, 2019

Hourly Volumes

Time Period	Tue	Wed	Thu				
	Oct 29	Oct 30	Oct 31				
0 - 1	2	1	2				
1 - 2	0	1	0				
2 - 3	1	1	1				
3 - 4	1	1	1				
4 - 5	0	0	0				
5 - 6	2	2	1				
6 - 7	7	4	9				
7 - 8	33	26	28				
8 - 9	64	62	56				
9 - 10	33	35	35				
10 - 11	23	30	37				
11 - 12	28	27	36				
12 - 13	33	33	33				
13 - 14	32	16	34				
14 - 15	46	32	47				
15 - 16	59	54	46				
16 - 17	47	44	51				
17 - 18	40	42	46				
18 - 19	29	33	24				
19 - 20	22	37	18				
20 - 21	16	14	26				
21 - 22	9	5	8				
22 - 23	4	5	13				
23 - 24	2	4	0				
Day Total	533	509	552				

15-Minute Volumes

Time Start	Tue	Wed	Thu				
	Oct 29	Oct 30	Oct 31				
0:00	0	0	0				
0:15	0	0	1				
0:30	0	1	0				
0:45	2	0	1				
1:00	0	0	0				
1:15	0	0	0				
1:30	0	1	0				
1:45	0	0	0				
2:00	0	0	0				
2:15	0	0	0				
2:30	0	0	0				
2:45	1	1	1				
3:00	0	0	0				
3:15	0	0	0				
3:30	0	0	1				
3:45	1	1	0				
4:00	0	0	0				
4:15	0	0	0				
4:30	0	0	0				
4:45	0	0	0				
5:00	0	0	0				
5:15	0	0	0				
5:30	1	1	1				
5:45	1	1	0				
6:00	1	0	3				
6:15	1	2	0				
6:30	2	0	5				
6:45	3	2	1				
7:00	7	3	4				
7:15	3	8	3				
7:30	7	4	7				
7:45	16	11	14				
8:00	18	16	16				
8:15	22	22	11				
8:30	10	13	18				
8:45	14	11	11				
9:00	7	13	5				
9:15	16	7	8				
9:30	3	10	11				
9:45	7	5	11				
10:00	7	8	9				
10:15	5	10	7				
10:30	5	8	9				
10:45	6	4	12				
11:00	9	1	3				
11:15	5	10	9				
11:30	8	11	14				
11:45	6	5	10				
12:00	10	7	8				
12:15	5	11	6				
12:30	9	11	11				
12:45	9	4	8				
13:00	4	3	11				
13:15	7	5	7				
13:30	9	2	9				
13:45	12	6	7				
14:00	10	4	8				
14:15	18	14	13				
14:30	9	9	15				
14:45	9	5	11				
15:00	11	13	12				
15:15	24	22	13				
15:30	16	12	14				
15:45	8	7	7				
16:00	13	10	13				
16:15	12	10	18				
16:30	9	14	11				
16:45	13	10	9				
17:00	10	6	11				
17:15	10	8	11				
17:30	10	13	12				
17:45	10	15	12				
18:00	5	12	8				
18:15	12	2	5				
18:30	6	12	4				
18:45	6	7	7				
19:00	6	8	5				
19:15	4	18	5				
19:30	5	9	3				
19:45	7	2	5				
20:00	5	3	9				
20:15	4	3	6				
20:30	4	3	7				
20:45	3	5	4				
21:00	3	2	3				
21:15	4	1	3				
21:30	1	0	1				
21:45	1	2	1				
22:00	0	3	5				
22:15	0	1	5				
22:30	3	0	1				
22:45	1	1	2				
23:00	0	1	0				
23:15	1	2	0				
23:30	0	0	0				
23:45	1	1	0				



Site notes:

Vehicle Speed Summary

Saanich Engineering Department

Count Id: R0025-01

Filename: Ambassador between Quadra St and Morris Dr-Oct-2019.xlsm

Location: Ambassador Ave between Quadra St and Morris Dr

Note:

Direction: **East-West**

Dates: **October 28, 2019 To November 01, 2019**

Filtered data

AVG. SPEED	18 mph	30 km/h
50 % SPEED	18 mph	30 km/h
85 % SPEED	22 mph	36 km/h
95 % SPEED	25 mph	40 km/h

Location Map



Ambassador Ave between Quadra St and Morris Dr

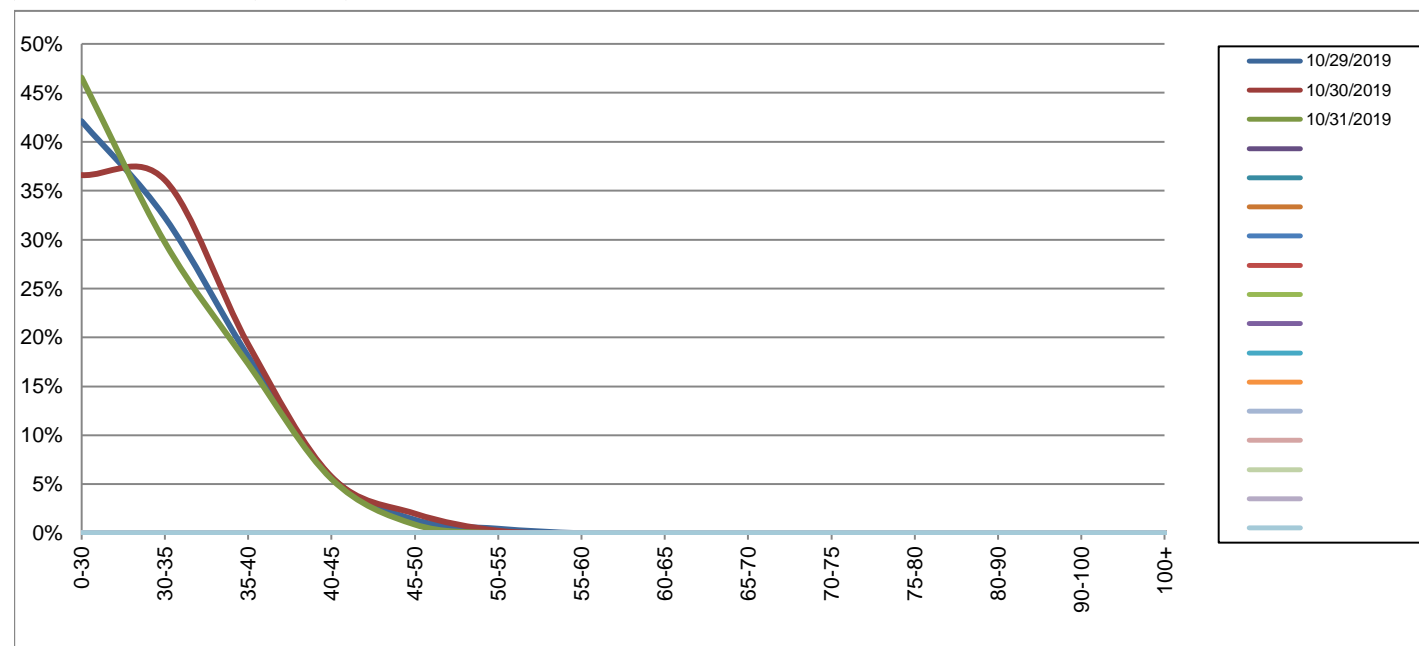
Westbound

October 29, 2019 to October 31, 2019

Daily Speed Bin Percentages															Daily Speed Bin Volumes														Total	Avg.
Bin #	1	2	3	4	5	6	7	8	9	10	11	12	13	14	1	2	3	4	5	6	7	8	9	10	11	12	13	14	Volume	Speed
Bin Speeds	0-30	30-35	35-40	40-45	45-50	50-55	55-60	60-65	65-70	70-75	75-80	80-90	90-100	100+	0-30	30-35	35-40	40-45	45-50	50-55	55-60	60-65	65-70	70-75	75-80	80-90	90-100	100+		
10/29/2019	42.1%	32.3%	18.1%	5.7%	1.4%	0.5%	0.0%	0.0%	0.0%	0.0%	0.0%	0.0%	0.0%	0.0%	184	141	79	25	6	2	0	0	0	0	0	0	0	0	437	27
10/30/2019	36.6%	36.1%	19.3%	5.8%	2.0%	0.3%	0.0%	0.0%	0.0%	0.0%	0.0%	0.0%	0.0%	0.0%	146	144	77	23	8	1	0	0	0	0	0	0	0	0	399	28
10/31/2019	46.6%	29.7%	17.3%	5.5%	0.9%	0.0%	0.0%	0.0%	0.0%	0.0%	0.0%	0.0%	0.0%	0.0%	210	134	78	25	4	0	0	0	0	0	0	0	0	0	451	26
Total	42.0%	32.6%	18.2%	5.7%	1.4%	0.2%	0.0%	0.0%	0.0%	0.0%	0.0%	0.0%	0.0%	0.0%	540	419	234	73	18	3	0	0	0	0	0	0	0	1287	27	

Speed Data Summary

Bin #	1	2	3	4	5	6	7	8	9	10	11	12	13	14	Total
Bin Speeds	0-30	30-35	35-40	40-45	45-50	50-55	55-60	60-65	65-70	70-75	75-80	80-90	90-100	100+	
Survey Total	540	419	234	73	18	3	0	0	0	0	0	0	0	0	1287
% Total	42.0%	32.6%	18.2%	5.7%	1.4%	0.2%	0.0%	0.0%	0.0%	0.0%	0.0%	0.0%	0.0%	0.0%	100%
Accumulated %	42.0%	74.5%	92.7%	98.4%	99.8%	100.0%	100.0%	100.0%	100.0%	100.0%	100.0%	100.0%	100.0%	100.0%	
Inverse Accum. %	58.0%	25.5%	7.3%	1.6%	0.2%	0.0%	0.0%	0.0%	0.0%	0.0%	0.0%	0.0%	0.0%	0.0%	
Average Speed	27 KM/H														



Site notes:

Ambassador Ave between Quadra St and Morris Dr

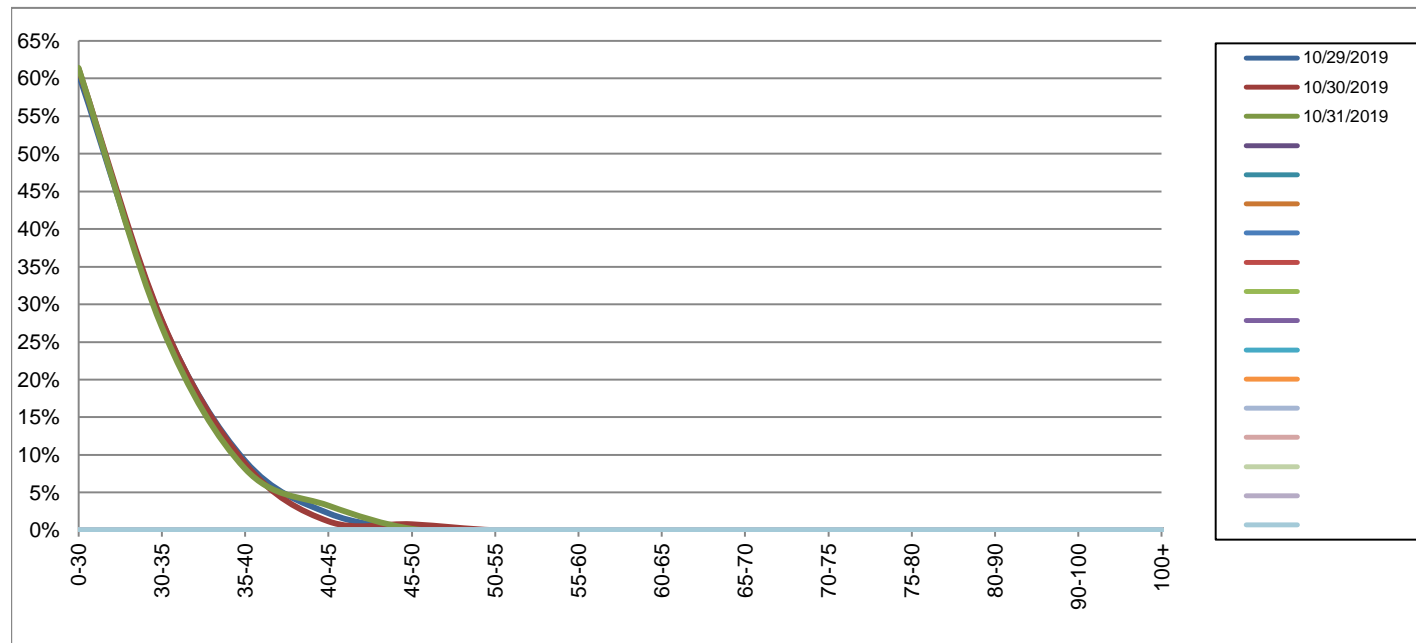
Eastbound

October 29, 2019 to October 31, 2019

Daily Speed Bin Percentages															Daily Speed Bin Volumes														Total	Avg.
Bin #	1	2	3	4	5	6	7	8	9	10	11	12	13	14	1	2	3	4	5	6	7	8	9	10	11	12	13	14	Volume	Speed
Bin Speeds	0-30	30-35	35-40	40-45	45-50	50-55	55-60	60-65	65-70	70-75	75-80	80-90	90-100	100+	0-30	30-35	35-40	40-45	45-50	50-55	55-60	60-65	65-70	70-75	75-80	80-90	90-100	100+		
10/29/2019	60.6%	27.8%	9.2%	2.3%	0.2%	0.0%	0.0%	0.0%	0.0%	0.0%	0.0%	0.0%	0.0%	0.0%	323	148	49	12	1	0	0	0	0	0	0	0	0	0	533	23
10/30/2019	61.3%	27.9%	8.8%	1.2%	0.8%	0.0%	0.0%	0.0%	0.0%	0.0%	0.0%	0.0%	0.0%	0.0%	312	142	45	6	4	0	0	0	0	0	0	0	0	0	509	22
10/31/2019	61.4%	27.0%	8.2%	3.3%	0.2%	0.0%	0.0%	0.0%	0.0%	0.0%	0.0%	0.0%	0.0%	0.0%	339	149	45	18	1	0	0	0	0	0	0	0	0	0	552	23
Total	61.1%	27.5%	8.7%	2.3%	0.4%	0.0%	0.0%	0.0%	0.0%	0.0%	0.0%	0.0%	0.0%	0.0%	974	439	139	36	6	0	0	0	0	0	0	0	0	0	1594	23

Speed Data Summary

Bin #	1	2	3	4	5	6	7	8	9	10	11	12	13	14	Total
Bin Speeds	0-30	30-35	35-40	40-45	45-50	50-55	55-60	60-65	65-70	70-75	75-80	80-90	90-100	100+	
Survey Total	974	439	139	36	6	0	0	0	0	0	0	0	0	0	1594
% Total	61.1%	27.5%	8.7%	2.3%	0.4%	0.0%	0.0%	0.0%	0.0%	0.0%	0.0%	0.0%	0.0%	0.0%	100%
Accumulated %	61.1%	88.6%	97.4%	99.6%	100.0%	100.0%	100.0%	100.0%	100.0%	100.0%	100.0%	100.0%	100.0%	100.0%	
Inverse Accum. %	38.9%	11.4%	2.6%	0.4%	0.0%	0.0%	0.0%	0.0%	0.0%	0.0%	0.0%	0.0%	0.0%	0.0%	
Average Speed	23 KM/H														



Site notes:

Ambassador Ave between Quadra St and Morris Dr

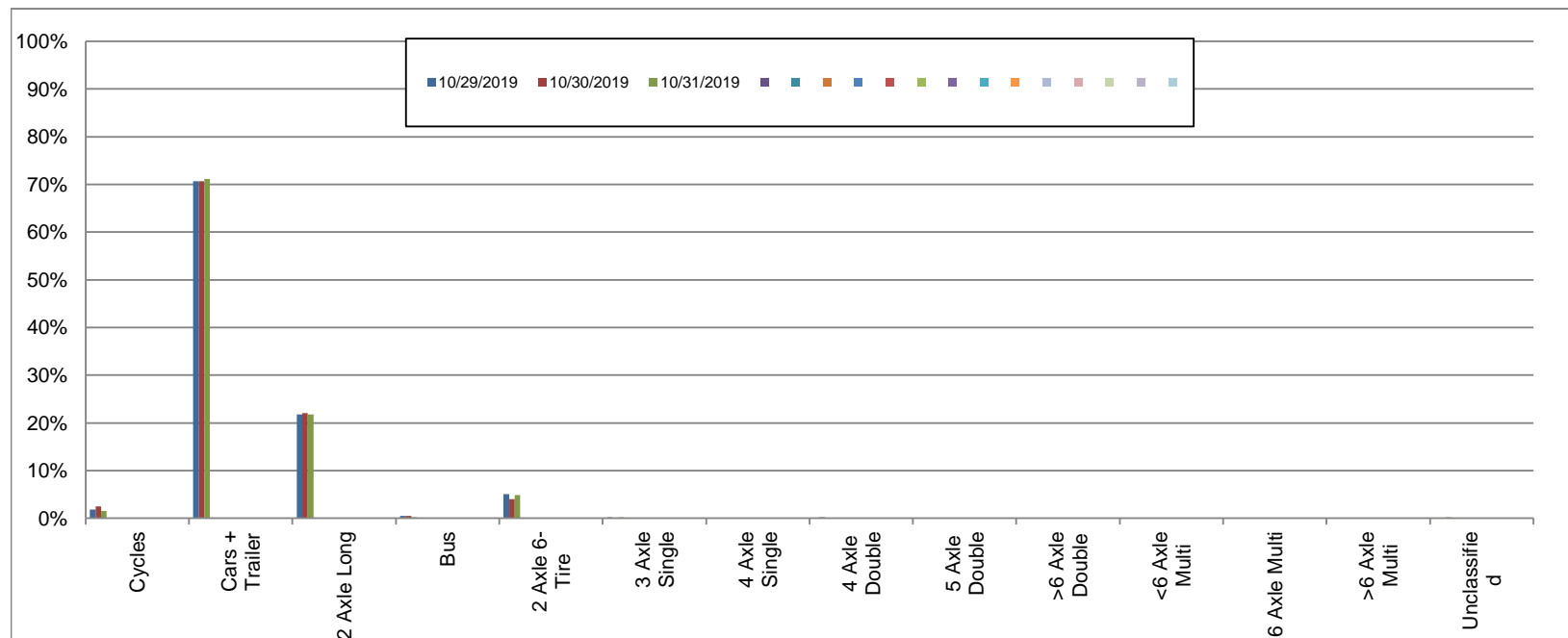
Westbound

October 29, 2019 to October 31, 2019

Daily Class Bin Percentages															Daily Class Bin Volumes														
Bin #	1	2	3	4	5	6	7	8	9	10	11	12	13	14	1	2	3	4	5	6	7	8	9	10	11	12	13	14	Total Volume
Bin Class	Cycles	Cars + Trailer	2 Axle Long	Bus	2 Axle 6-Tire	3 Axle Single	4 Axle Single	4 Axle Double	5 Axle Double	>6 Axle Double	<6 Axle Multi	6 Axle Multi	>6 Axle Multi	Unclassified	Cycles	Cars + Trailer	2 Axle Long	Bus	2 Axle 6-Tire	3 Axle Single	4 Axle Single	4 Axle Double	5 Axle Double	>6 Axle Double	<6 Axle Multi	6 Axle Multi	>6 Axle Multi	Unclassified	
10/29/2019	1.8%	70.7%	21.7%	0.5%	5.0%	0.2%	0.0%	0.0%	0.0%	0.0%	0.0%	0.0%	0.0%	0.0%	8	309	95	2	22	1	0	0	0	0	0	0	0	0	437
10/30/2019	2.5%	70.7%	22.1%	0.5%	4.0%	0.0%	0.0%	0.3%	0.0%	0.0%	0.0%	0.0%	0.0%	0.0%	10	282	88	2	16	0	0	1	0	0	0	0	0	0	399
10/31/2019	1.6%	71.2%	21.7%	0.2%	4.9%	0.2%	0.0%	0.0%	0.0%	0.0%	0.0%	0.0%	0.0%	0.2%	7	321	98	1	22	1	0	0	0	0	0	0	0	1	451
Total	1.9%	70.9%	21.8%	0.4%	4.7%	0.2%	0.0%	0.1%	0.0%	0.0%	0.0%	0.0%	0.0%	0.1%	25	912	281	5	60	2	0	1	0	0	0	0	0	1	1287

Class Data Summary

Bin #	1	2	3	4	5	6	7	8	9	10	11	12	13	14	Total Volume
Bin Class	Cycles	Cars + Trailer	2 Axle Long	Bus	2 Axle 6-Tire	3 Axle Single	4 Axle Single	4 Axle Double	5 Axle Double	>6 Axle Double	<6 Axle Multi	6 Axle Multi	>6 Axle Multi	Unclassified	Total Volume
Survey Total	25	912	281	5	60	2	0	1	0	0	0	0	0	1	1287
% Total	1.9%	70.9%	21.8%	0.4%	4.7%	0.2%	0.0%	0.1%	0.0%	0.0%	0.0%	0.0%	0.0%	0.1%	100%
Accumulated %	1.9%	72.8%	94.6%	95.0%	99.7%	99.8%	99.8%	99.9%	99.9%	99.9%	99.9%	99.9%	99.9%	100.0%	
Inv. Accum. %	98.1%	27.2%	5.4%	5.0%	0.3%	0.2%	0.2%	0.1%	0.1%	0.1%	0.1%	0.1%	0.1%	0.0%	



Classification Descriptions

Bin #	Bin Description
1	Motorcycles
2	Passenger cars, including those with recreational trailers
3	2-axle pick-ups, vans, and RVs, including those with recreational trailers
4	Buses
5	2-axle, 6-tire single units
6	3-axle single units
7	4-axle single units
8	3-axle or 4-axle double unit
9	5-axle double unit
10	6-, 7-, or 8-axle double unit
11	5-axle multiple unit
12	6-axle multiple unit
13	7-or-more-axle multiple unit
14	Vehicles that could not be classified

Site notes:

Ambassador Ave between Quadra St and Morris Dr

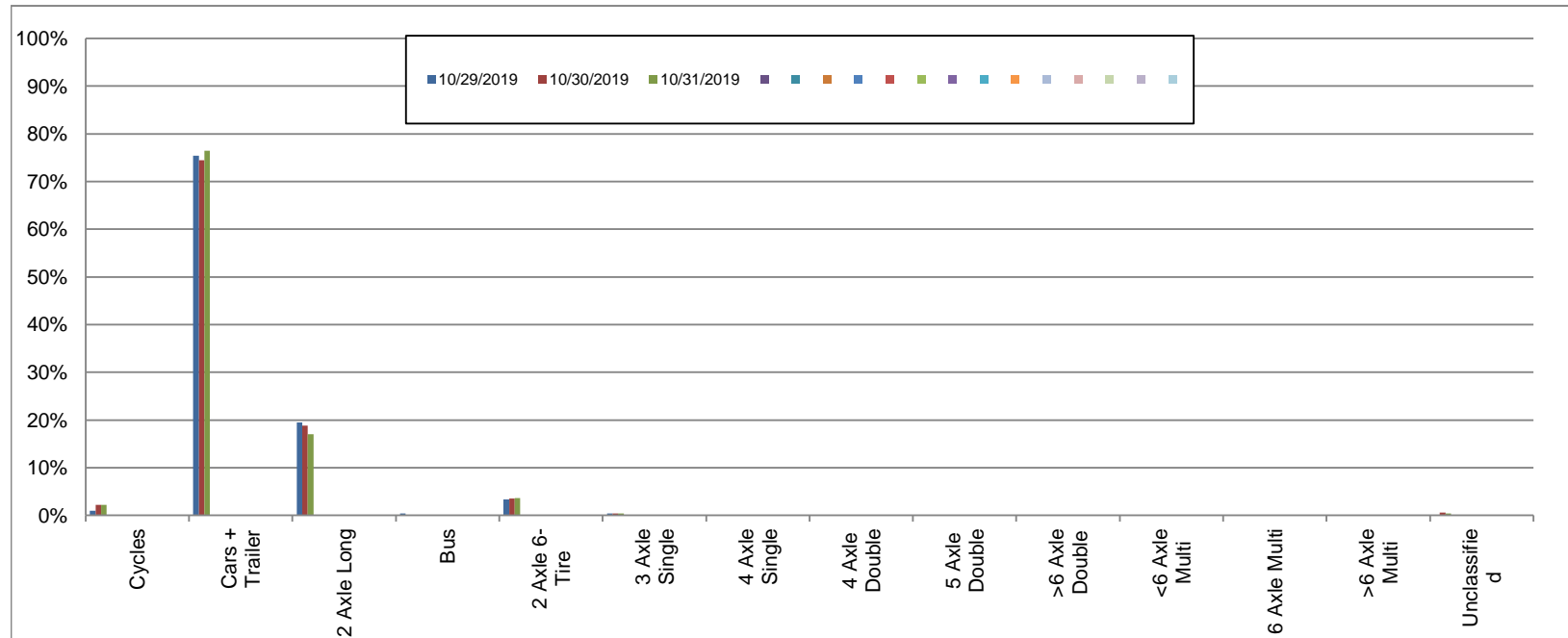
Eastbound

October 29, 2019 to October 31, 2019

Daily Class Bin Percentages															Daily Class Bin Volumes															
Bin #	1	2	3	4	5	6	7	8	9	10	11	12	13	14	1	2	3	4	5	6	7	8	9	10	11	12	13	14	Total Volume	
Bin Class	Cycles	Cars + Trailer	2 Axle Long	Bus	2 Axle 6-Tire	3 Axle Single	4 Axle Single	4 Axle Double	5 Axle Double	>6 Axle Double	<6 Axle Multi	6 Axle Multi	>6 Axle Multi	Unclassified	Cycles	Cars + Trailer	2 Axle Long	Bus	2 Axle 6-Tire	3 Axle Single	4 Axle Single	4 Axle Double	5 Axle Double	>6 Axle Double	<6 Axle Multi	6 Axle Multi	>6 Axle Multi	Unclassified		
10/29/2019	0.9%	75.4%	19.5%	0.4%	3.4%	0.4%	0.0%	0.0%	0.0%	0.0%	0.0%	0.0%	0.0%	0.0%	5	402	104	2	18	2	0	0	0	0	0	0	0	0	533	
10/30/2019	2.2%	74.5%	18.9%	0.0%	3.5%	0.4%	0.0%	0.0%	0.0%	0.0%	0.0%	0.0%	0.0%	0.6%	11	379	96	0	18	2	0	0	0	0	0	0	0	0	3	509
10/31/2019	2.2%	76.4%	17.0%	0.0%	3.6%	0.4%	0.0%	0.0%	0.0%	0.0%	0.0%	0.0%	0.0%	0.4%	12	422	94	0	20	2	0	0	0	0	0	0	0	0	2	552
Total	1.8%	75.5%	18.4%	0.1%	3.5%	0.4%	0.0%	0.0%	0.0%	0.0%	0.0%	0.0%	0.0%	0.3%	28	1203	294	2	56	6	0	0	0	0	0	0	0	5	1594	

Class Data Summary

Bin #	1	2	3	4	5	6	7	8	9	10	11	12	13	14	Total Volume
Bin Class	Cycles	Cars + Trailer	2 Axle Long	Bus	2 Axle 6-Tire	3 Axle Single	4 Axle Single	4 Axle Double	5 Axle Double	>6 Axle Double	<6 Axle Multi	6 Axle Multi	>6 Axle Multi	Unclassified	Total Volume
Survey Total	28	1203	294	2	56	6	0	0	0	0	0	0	0	5	1594
% Total	1.8%	75.5%	18.4%	0.1%	3.5%	0.4%	0.0%	0.0%	0.0%	0.0%	0.0%	0.0%	0.0%	0.3%	100%
Accumulated %	1.8%	77.2%	95.7%	95.8%	99.3%	99.7%	99.7%	99.7%	99.7%	99.7%	99.7%	99.7%	99.7%	100.0%	
Inv. Accum. %	98.2%	22.8%	4.3%	4.2%	0.7%	0.3%	0.3%	0.3%	0.3%	0.3%	0.3%	0.3%	0.3%	0.0%	



Classification Descriptions

Bin #	Bin Description
1	Motorcycles
2	Passenger cars, including those with recreational trailers
3	2-axle pick-ups, vans, and RVs, including those with recreational trailers
4	Buses
5	2-axle, 6-tire single units
6	3-axle single units
7	4-axle single units
8	3-axle or 4-axle double unit
9	5-axle double unit
10	6-, 7-, or 8-axle double unit
11	5-axle multiple unit
12	6-axle multiple unit
13	7-or-more-axle multiple unit
14	Vehicles that could not be classified

Site notes: